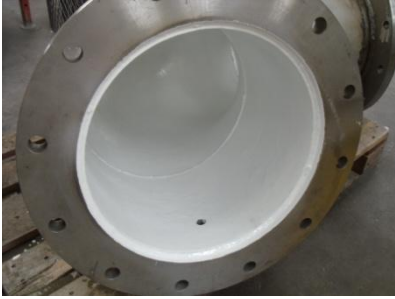


# Brushable Ceramic Coatings



Ultra-smooth, ceramic reinforced epoxy that provides a high gloss, low friction coating to protect against turbulence and abrasion. Seals and protects equipment from corrosion and wear.

**DWP** Brushable Ceramic is a solvent-free ceramic filled two part epoxy coating. It is designed to protect metal surfaces against abrasive and corrosive agents. It can be used as smooth, protective coating on metal surfaces or as a low friction top coat.



### Benefits

- Smooth Brushable consistency
- Gloss finish to reduce friction, turbulence and cavitation.
- Excellent adhesion

### Chemical Resistance

Excellent chemical resistance to most acids, alkalis and solvents

### Applications

- Lining tanks and chutes
- Valves
- Heat exchangers
- Condensers
- Cooling pump impellers
- Resurfacing and repairing of worn or corroded metal parts
- Protecting metal surfaces against abrasive and corrosive agent

### Product Characteristics:

#### Technology Epoxy

Colour	: Resin - White : Hardener – Clear / Greenish
Mixing Ratio	: By Weight -100 parts resin: 9 parts hardener : By volume -100 parts resin: 5 parts hardener
NOTE flat- working  geltime and	: Mix resin and hardener for 3 minutes. Use a spatula, or other edged implement. Increases in temperature will shorten the time, geltime and setting time. : Decreases in temperature will extend the working time, setting time.
Specific Gravity @ 25°C	: Mixed Compound 1,82-1,84 g/cm <sup>3</sup>
Viscosity @ 25°C	: 8500 cps ( mixed compound )
Practical Working Time (Pot Life)	: 250g mass @ 25°C =10-15 minutes
Geltime @25°C	: 30 minutes on a 5mm thick lining
Setting time@ 25°C	: 20mm thick cast = 35 minutes
Minimum Application Temperature	: 7°C ( need to pre-warm at lower temps )
Coverage	: 1,8 kg / m <sup>2</sup> ( 1mm thick lining )

#### TYPICAL CURING PERFORMANCE

Hardness after 24 hours @ 25°C	: Shore D 85
Shrinkage After Cure	: Maximum 0,5%
Elongation ( Average )	: 1 %
Tensile Strength	: ( DIN 53455 ) 45 MPA
Impact Strength	: ( DIN 53453 ) >10 kJ/m <sup>2</sup>
Compressive Strength	: ( DIN 53454 ) Average 85-90 MPA
Flexural Strength	: ( DIN 53452 ) 90-100 MPA
Lap Shear Strength	: ( ISO 4587 ) 6,5 MPA on cleaned & roughened mild steel
Heat Resistance	: 85-90°C
Adhesion	: To cleaned and roughened metal, steels and concrete : excellent
Chemical Resistance	: Excellent against water, oil, grease, detergents, diluted acids and alkaline. Resistant to solvents, aliphatic alcohols and aromatics. Against esters, ketones and chlorinated hydrocarbons, tests are recommended.
Water Absorption	: Immersion for 24 hrs @ 25°C in diluted water – maximum absorption 0,2%